

WELDING AND GRINDING

WE RECENTLY INTRODUCED AN EXTENSIVE LINE OF HIGH QUALITY WELDING AND GRINDING PRODUCTS THAT PROVIDE WORKERS WITH BETTER COMFORT, LESS FATIGUE AND IMPROVED PRODUCTIVITY. OUR EZ AIR PAPRS AND SARs ARE INTENDED FOR INDUSTRIAL APPLICATIONS WHERE RESPIRATORY, EYE AND FACE PROTECTION ARE REQUIRED. OUR LIGHTWEIGHT PORTABLE FUME EXTRACTOR IS THE MOST VERSATILE PORTABLE EXTRACTOR AVAILABLE. WE ARE COMMITTED TO OFFERING YOU THE BEST WELDING AND GRINDING PRODUCTS AND ACCESSORIES ON THE MARKET.



EZ AIR MAX POWERED AIR PURIFYING RESPIRATOR



EZ AIR MAX

Our EZ Air Max Powered Air Purifying Respirator (PAPR) is a complete particulate system intended for industrial applications where combined respiratory, eye and face protection is required. This welding helmet features a flip-up visor to expose a grind shield below that maintains respiratory protection while workers can continue grinding or inspecting welds. It is a motorized, Lithium-ion battery operated system that provides a constant supply of fresh, filtered air over the user's face. At an APF level of 25, it creates an optimal protective pressure inside the respirator head top keeping away particulates (dust, steel, manganese, stainless steel, chromium, galvanized steel, cadmium, lead and ozone*). Recommended applications are welding, assembly, facility maintenance, grinding, machine operations, painting and sanding. Suggested industries include automotive, food and beverage, pharmaceutical, general manufacturing, metal production and fabrication, military maintenance, repair and operation (MRO) and transportation. Complies with ANSI Z87.1+ and CAN/CSA Z94.3 for face-shield/eye protection. **NIOSH approved**

Complete PAPR assembly includes:

- Welding Shield w/ ADF lens
- Downtube w/ FR cover
- Blower
- Battery
- Waist Belt
- Charger
- Flow Tester
- HEPA filter
- Storage Bag

*Always consult an industrial hygienist or safety expert to determine if APF will be acceptable for the measured concentration level of your application.



EZ AIR MAX

Complete PAPR assembly with 9904-36 ADF lens:

- Filter size: 2.36" x 3.93" (5.99 cm x 9.9 cm)
- UV/IR: Up to shade 16, permanent outer coating to protect eyes
- Battery: Solar Cells primary with digital Lithium powered backup (lasts 5-10 years)
- Switching time: 1/10,000
- Light Shade Modes: 3
- TIG rating: <5 Amps
- Grind mode: Yes

- 9936** EZ Air MAX PAPR Assembly
9936-E EZ Air MAX PAPR Assembly (for International Charging)
9904-36 Replacement ADF Lens Kit



EZ AIR POWERED AIR PURIFYING RESPIRATORS

EZ AIR P A P R S Y S T E M S

1

CHOOSE WELDING SHIELD



9936-BH7500



9935-BHTX54V



9935-BHTX81V

2

ADD BLOWER ASSEMBLY

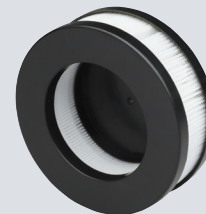


9935-BLW

(Shown disassembled)
Includes downtube w/ FR cover, battery, charger, belt,
flow tester, HEPA filter and storage bag

3

REPLACEMENT HEPA FILTER



9935-FIL

Replacement (HEPA)

X 5 4 V	A N D	X 8 1 V	A D F	L E N S	C H A R T
PART NO.	VIEWING AREA (W x H)	DARK SHADE	MAGNETIC SENSOR	WARRANTY	STANDARDS
9935-X54V	1.9" x 3.8" (4.8 cm x 9.6 cm)	5-14	No	3 years	ANSI/CSA
9935-X81V	3.2" x 3.9" (8.1 cm x 9.9 cm)	5-14	Yes "X-TIG"	3 years	ANSI/CSA

X54V ADF LENS

- Viewing area: 1.9" x 3.8" (4.8 cm x 9.6 cm)
- UV/IR: Up to shade 16, permanent outer coating to protect eyes
- Battery: Solar Cells primary with digital Lithium powered backup (lasts 5-10 years)
- Switching time: 1/10,000
- Light Shade Modes: 4
- TIG rating: 5 Amps
- Grind mode: Yes



9935-X54V Included in Economy model

X81V ADF LENS

- Viewing area: 3.2" x 3.9" (8.1 cm x 9.9 cm)
- UV/IR: Up to shade 16, permanent outer coating to protect eyes
- Battery: Solar Cells primary with digital Lithium powered backup (lasts 5-10 years)
- Switching time: 1/10,000
- Light Shade Modes: 3
- TIG rating: 5 Amps
- Grind mode: Yes



9935-X81V Included in Deluxe model

HELMET DECALS

Stand out from everyone else! With an assortment of graphics to choose from, our decal sheet allows you the opportunity to fully customize your Welding Shield to get that unique look you desire. Our helmet decals are included with every purchase of a welding helmet.

